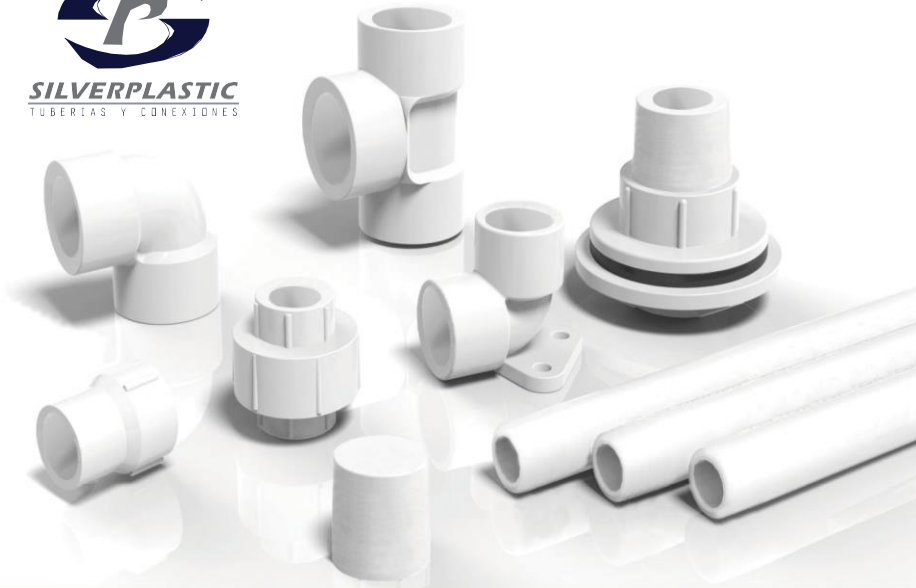




SILVERPLASTIC
TUBERIAS Y CONEXIONES



ESPECIFICACIONES

CONEXIONES DE PVC CÉDULA 40 INYECTADAS, FABRICADAS CON MATERIA PRIMA DE POLI CLORURO DE VINILO (PVC) TIPO I, CLASIFICACIÓN DE CELDA 12454-B ASTM D-2466.

DIÁMETROS

1/2" HASTA 8" EN STOCK
HASTA 12" SOBRE PEDIDO.

RESISTE CORROSIÓN

LAS CONEXIONES DE PVC CÉDULA 40, NO SUFREN DE CORROSIÓN, LO QUE GARANTIZA FUNCIONALIDAD POR MUCHOS AÑOS.

BAJO COSTO DE INSTALACIÓN

PARA SU INSTALACIÓN NO ES NECESARIA HERRAMIENTA ESPECIAL SE INSTALA FACIL Y RÁPIDAMENTE

SIN FRICCIÓN

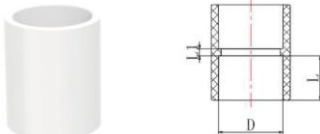
SUS PAREDES LISAS LE DAN UN MÍNIMO EN PÉRDIDAS POR FRICCIÓN

APLICACIONES

SUMINISTRO DE AGUA POTABLE, INDUSTRIA DE COSMÉTICOS, ALBERCAS, SPAS, RIEGO EN INVERNADEROS, FERTI-RIEGO, MEDICAMENTOS VETERINARIOS, AGUA HELADA, SISTEMAS DE REFRIGERACIÓN ETC.

CONEXIONES PVC CEDULA 40

• COPLÉ



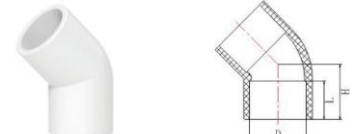
size(inch)	D(mm)	L(mm)	L1(mm)
1/2"	21.34	17.5	6
3/4"	26.67	18.5	3
1"	33.40	22.5	3.5
1-1/4"	42.16	24.0	3.5
1-1/2"	48.26	28.0	3.5
2"	60.32	29.5	5
2-1/2"	73.02	44.5	5
3"	88.90	48.0	5.5
4"	114.3	51.0	6

• CODO 90°



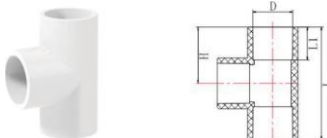
size(inch)	D(mm)	L(mm)	H(mm)
1/2"	21.34	17.5	30
3/4"	26.67	18.5	33.5
1"	33.40	22.5	41.5
1-1/4"	42.16	24.0	47.5
1-1/2"	48.26	28.0	54.5
2"	60.32	29.5	63.5
2-1/2"	73.02	44.5	85
3"	88.90	48.0	96.5
4"	114.3	51.0	113

• CODO 45°



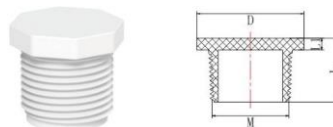
size(inch)	D(mm)	L(mm)	H(mm)
1/2"	21.34	17.5	30
3/4"	26.67	18.5	33.5
1"	33.40	22.5	41.5
1-1/4"	42.16	24.0	47.5
1-1/2"	48.26	28.0	54.5
2"	60.32	29.5	63.5
2-1/2"	73.02	44.5	85
3"	88.90	48.0	96.5
4"	114.3	51.0	113

• TEE



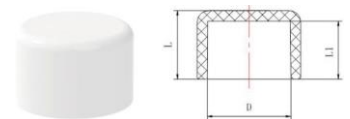
size(inch)	D(mm)	L1(mm)	H(mm)	L(mm)
1/2"	21.34	17.5	30	60
3/4"	26.67	18.5	33.5	67
1"	33.40	22.5	41.5	83
1-1/4"	42.16	24.0	47.5	95
1-1/2"	48.26	28.0	54.5	109
2"	60.32	29.5	63.5	127
2-1/2"	73.02	44.5	85	170
3"	88.90	48.0	96.5	193
4"	114.3	51.0	113	226

• TAPON ROSCA



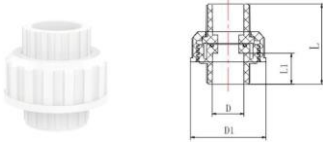
size(inch)	D(mm)	L1(mm)	H(mm)	L(mm)
1/2"	27	5	23.8	1/2"
3/4"	32.5	6	25.4	3/4"
1"	39	6	31.8	1"
1-1/4"	54	6	32	1-1/4"
1-1/2"	60	6	32	1-1/2"
2"	76	6	34	2"
2-1/2"	83.5	8	49	2-1/2"
3"	103.5	10	51	3"
4"	133	12	54.5	4"

• TAPA CAPA



size(inch)	D(mm)	L1(mm)	L(mm)
1/2"	21.34	17.5	20.0
3/4"	26.67	18.5	21.5
1"	33.40	22.5	26.0
1-1/4"	42.16	24.0	27.5
1-1/2"	48.26	28.0	31.5
2"	60.32	29.5	34.5
2-1/2"	73.02	44.5	49.5
3"	88.90	48.0	53.5
4"	114.3	51.0	57.0

· **TUERCA UNION**



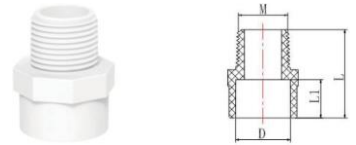
size(inch)	D(mm)	D1(mm)	L1(mm)	L(mm)
1/2"	27	51.6	17.5	54.5
3/4"	32.5	65.8	18.5	58.2
1"	39	74	22.5	68.8
1-1/4"	54	87	24	75.3
1-1/2"	60	102.5	28	83
2"	76	120	29.5	103.2

· **ADAP. HEMBRA**



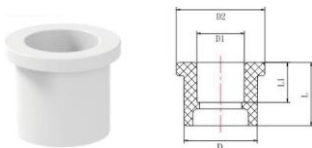
size(inch)	D(mm)	L1(mm)	L(mm)	M
1/2"	21.34	17.5	41.5	1/2"
3/4"	26.67	18.5	43.0	3/4"
1"	33.40	22.5	55.0	1"
1-1/4"	42.16	24.0	55.0	1-1/4"
1-1/2"	48.26	28.0	61.5	1-1/2"
2"	60.32	29.5	62.0	2"
2-1/2"	73.02	44.5	91.0	2-1/2"
3"	88.90	48.0	95.0	3"
4"	114.3	51.0	100	4"

· **ADAP. MACHO**



size(inch)	D(mm)	L1(mm)	L(mm)	M
1/2"	21.34	17.5	41.5	1/2"
3/4"	26.67	18.5	43.0	3/4"
1"	33.40	22.5	55.0	1"
1-1/4"	42.16	24.0	55.0	1-1/4"
1-1/2"	48.26	28.0	61.5	1-1/2"
2"	60.32	29.5	62.0	2"
2-1/2"	73.02	44.5	91.0	2-1/2"
3"	88.90	48.0	95.0	3"
4"	114.3	51.0	100	4"

· **RED. BUSHING**



size(inch)	D(mm)	D1(mm)	D2(mm)	L1(mm)	L(mm)
3/4X1/2"	26.67	21.34	33	17.5	27.5
1X1/2"	33.40	21.34	40	17.5	28.5
1X3/4"	33.40	26.67	40	18.5	28.5
1-1/4X1"	42.16	33.40	47.8	22.5	31.5
1-1/2X1"	48.26	33.40	54	22.5	34
1-1/2X1-1/4"	48.26	42.16	54	24	36
2X1"	60.32	33.40	66.5	22.5	36.5
2X1-1/2"	60.32	48.26	66.5	28	39
2-1/2X2"	73.02	60.32	82	29.5	53.5
3X2-1/2"	88.90	73.02	97.5	44.5	57
4X3"	114.3	88.90	124	48	61